

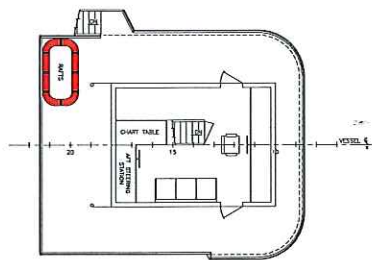
# K Marine X

Specifications 7/15

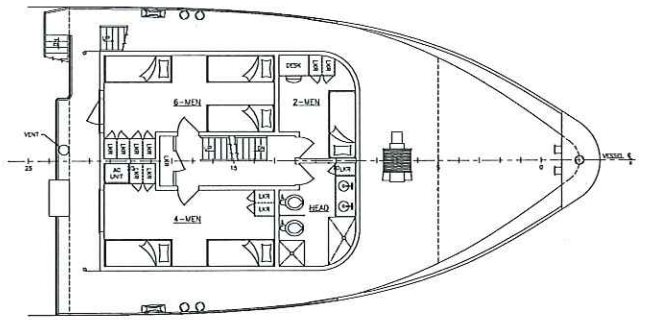
Official Number: 977466

Flag: USA

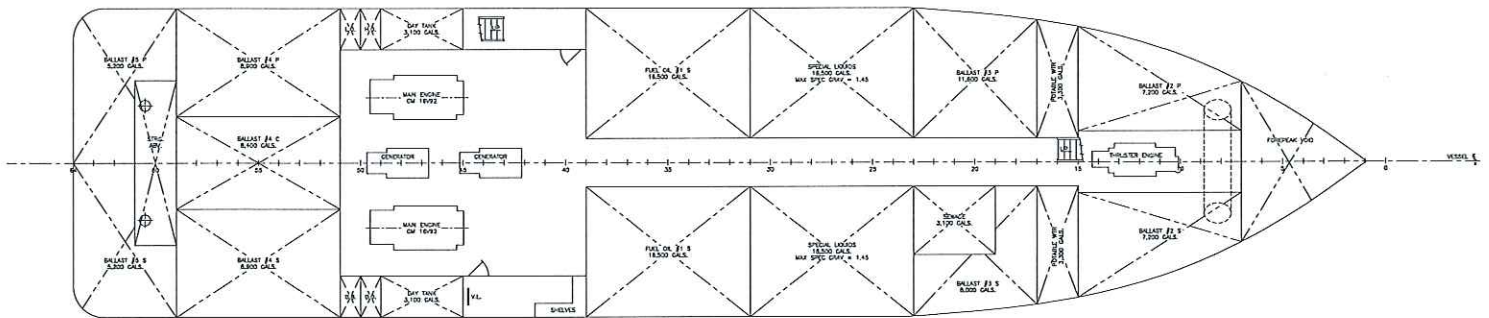
	U.S. Measurements	Metric Equivalents	
<b>Dimensions:</b>			
	140' x 30' x 12'	42.67 m x 9.14 m x 3.66 m	
Registered Tons:	97	88 MT	
Clear Deck:	80' x 22'	24.38 m x 6.71 m	
Clear Deck Area:	1,760 sq. ft.	163.59 m <sup>2</sup>	
Deck Tonnage Capacity:	275 LT	279.41 MT	
<b>Capacities:</b>			
Fuel:	38,000 US Gallons	143.84 m <sup>3</sup>	
Lube Oil:	500 US Gallons	1.89 m <sup>3</sup>	
Transferable Fuel:	34,000 US Gallons @ 200 gallons per minute	128.70 m <sup>3</sup>	
Potable Water:	108,000 US Gallons @ 300 gallons per minute	408.82 m <sup>3</sup>	
Calcium Chloride:	786 BBLS		
<b>Machinery:</b>		<b>Classifications:</b>	
Main Engines:	(2) 16V92, 16 Cylinder Engines 650 Hp each	USCG:	USCG Sub Chapter T / OSV
Generators:	(2) Detroit Diesel 6-71 @ 75 kW	Class Society:	ABS Load Line
Horsepower:	1,300	Portable Tank Endorsement:	Yes
Maximum Speed:	12 Knots	Standby Endorsement:	Yes
Service Speed:	10 Knots		
Fuel Burn (@ Service Speed):	70 gallons per hour		
Ships Range (@ Service Speed):	5,428 Nautical Miles		
<b>Electronics:</b>		<b>Accommodations:</b>	
Radar:	(2) JNC 48 Mile	Passengers:	16 Plus 4 Crew
GPS/Plotter:	(1) Furno	Sleeping Accommodations:	20 in 6 Bunkrooms
VHF:	(3) Standard Horizon	Food Storage:	(4) Chest Freezers
SSB:	SEA222 with NECODE		(2) Stand-up Refrigerators
Satellite Phone:	Sailor / Iridium		(1) Walk-in Cooler
Navtex:	(1) Furno		



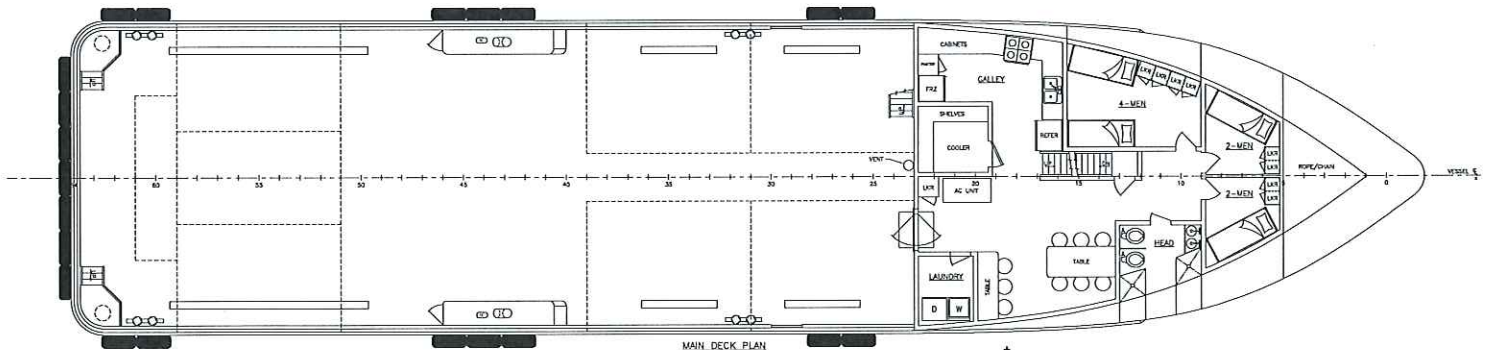
BRIDGE DECK PLAN



FOC'SLE DECK PLAN



HOLD PLAN



MAIN DECK PLAN



OUTBOARD PROFILE